

BLACKMER PARTS LIST

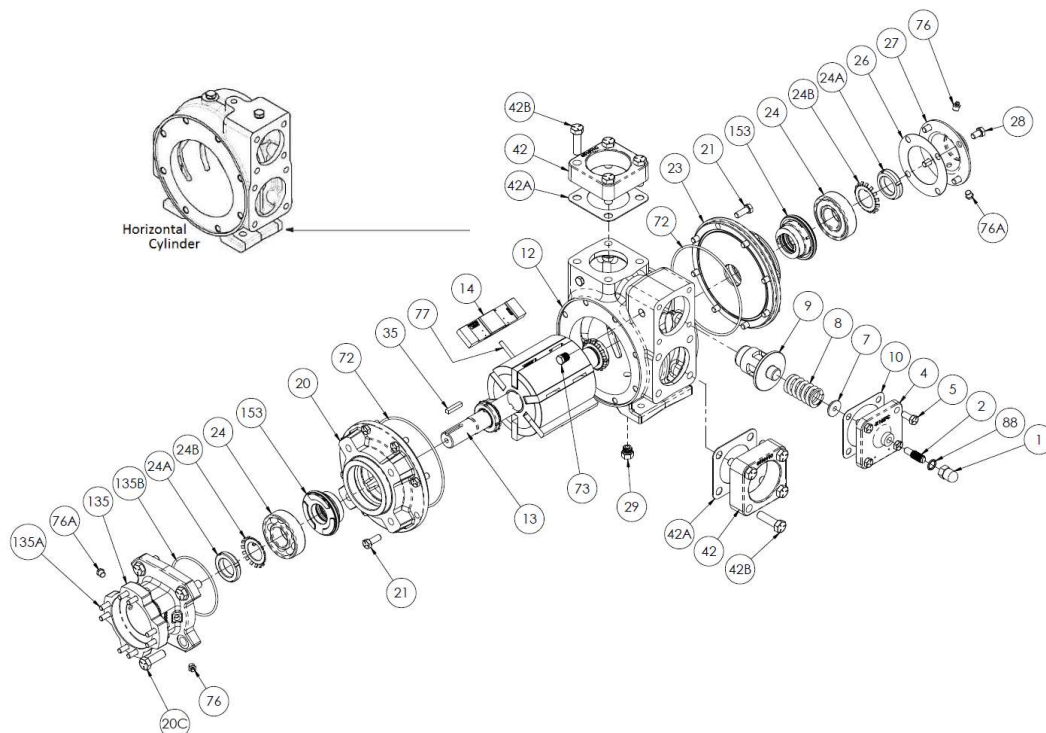
PUMP MODEL: GNX2.5A, GNXH2.5A

961623
Page 1 of 2

PARTS LIST
101-C02

Keep with Instructions 101-C00 for Installation, Operation and Maintenance

Section	101
Effective	Sept 2019
Replaces	Oct 2018



Ref. No.	Description	Parts per Pump	Part No.	Ref. No.	Description	Parts per Pump	Part No.
1	Cap - Relief Valve (R/V)	1	411452	24A	Locknut	2	903521
2	Adjusting Screw - R/V	1	431401	24B	Lockwasher	2	903522
4	Cover - R/V	1	411607	26	Gasket - Bearing Cover	1	¹ 383940
5	Capscrew - R/V Cover	4	920316	27	Bearing Cover	1	041433
7	Spring Guide - R/V	1	423955	28	Capscrews - Bearing Cover	4	920285
8	Spring - R/V (41-50 psi) †	1	471608	29	Pipe Plug Asy. (SAE #6), FKM (std.)	0-1	² 908212
	Spring - R/V (51-110 psi) (Std.)		471631		Pipe Plug Asy. (SAE #6), PTFE		² 908213
	Spring - R/V (111-125 psi)		471614		Pipe Plug Asy. (SAE #6), Buna-N		² 908211
9	Valve - R/V (41-50 psi) †	1	451609	35	Key, Shaft	1	909209
	Valve - R/V (51-125 psi) (Std.)		451623	42	Flange - 2½" NPT (Std.)*	2	651611
	Valve - R/V (51-125 psi) (Nickel Plated)		451624	42A	Gasket - NPT Flange (Std.)	2	¹ 381650
10	Gasket - R/V Cover	1	¹ 531603	42B	Capscrews - NPT Flange (Std.)	8	920532
12	Cylinder	1	021605	72	O-Ring - Head (FKM) (Std.)	2	¹ 701914
	Cylinder, w/Drain		021602		O-Ring - Head (PTFE)		702242
	Cylinder, Horizontal		021635		O-Ring - Head (Buna-N)		701947
13	Rotor & Shaft	1	261667	73	Gage Plug	2	908198
14	Vane - Duravane (Std.)	6	¹ 091619	76	Grease Fitting	1	317815
	Vane - EC Cast Iron		091621	76A	Grease Relief Fitting	1	701992
	Vane - EC Laminate		091627	77	Push Rod	3	¹ 121607
20	Head - Inboard	1	031427	88	Gasket - R/V Cap	1	¹ 701981
20C	Capscrews - Clamp	4	920510	135	Pump Adapter Machining		833990
21	Capscrews - Head	16	920331	135A	Hex Head Capscrew (Metric)		920028
23	Head - Outboard	1	031425	135B	O-Ring		701991
24	Ball Bearing	2	¹ 903156		Kit - Maintenance		898909

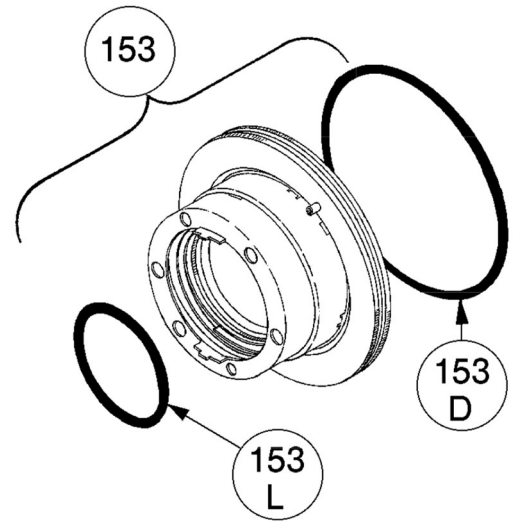
¹ Included in Maintenance Kit ² Included in cylinders with drain hole when applicable SS = Stainless Steel. EC = Extra-Clearance.
† RV Spring p/n 471608 must be used with Valve p/n 451609 to achieve listed pressures. * See Page 2 for Weld / ANSI flange options.

MECHANICAL SEALS

Ref. No.	Part Name	Parts Per Pump	Part No.
153	Mechanical Seal Complete - (Std.) Cast Iron Stationary Seat, Carbon Seal Face, FKM O-Rings. (IVCV)	2	¹ 331655
	Mechanical Seal Complete - Cast Iron Stationary Seat, PTFE O-Ring, Carbon Seal Face w/ PTFE Seal Ring. (IACT)		331673
	Mechanical Seal Complete - Stainless Steel Stationary Seat, PTFE O-Ring, Carbon Seal Face w/ PTFE Seal Ring. (WACT)		331648
	Mechanical Seal Complete - Cast Iron Stationary Seat, Carbon Seal Face, Buna-N O-Rings. (INCN)		331601
153D	O-Ring - Stationary (FKM)	2	701921
	O-Ring - Stationary (PTFE)		702056
	O-Ring - Stationary (Buna-N)		701934
153L	O-Ring - Rotating (FKM)	2	701980
	Seal Ring - Rotating (PTFE)		**
	O-Ring - Rotating (Buna-N)		701922

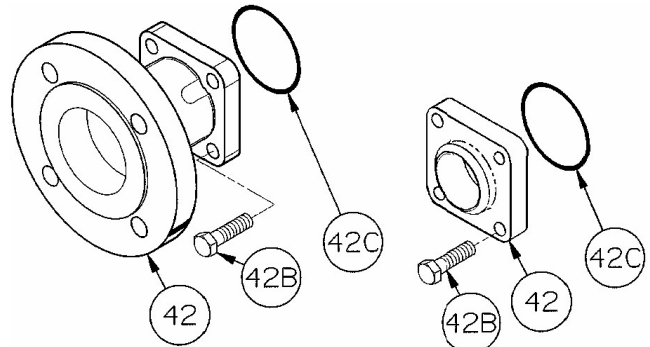
¹ Included in Maintenance Kit

**PTFE Rotating Seal Ring is not available as a separate part.



FLANGE OPTIONS

Ref. No.	Part Name	Parts Per Pump	Part No.
42	Flange - 2½" Weld	2	651610
	Flange - 3" ANSI		651617
42B	Capscrews - Weld / ANSI Flange	8	920491
42C	O-Ring - Weld/ANSI Flg. (FKM)	2	701924
	O-Ring - Weld/ANSI Flg. (PTFE)		702079
	O-Ring - Weld/ANSI Flg (Buna-N)		701925



ANSI FLANGE

WELD FLANGE

