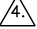
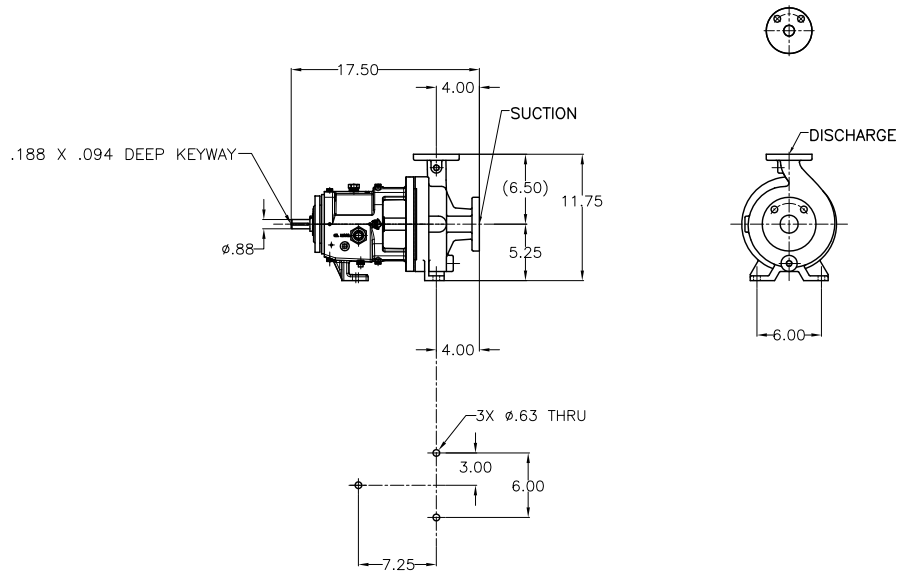


REV.	DESCRIPTION	BY	CHK.	APP.	DATE
A	RELEASED INTO PRODUCTION SEE ECN #GO1031	-	-	-	-

NOTES: UNLESS OTHERWISE SPECIFIED

- DIMENSIONS AND TOLERANCES PER ASME Y14.5M-1994.
- * INDICATES DIMENSIONS AND/OR FEATURES MODIFIED ON CURRENT REVISION LEVEL.
- DIMENSIONS REFLECT STANDARD MFG TOLERANCES.
-  WEIGHTS ARE APPROXIMATE BASED ON MANUFACTURER'S MATERIALS AND PUMP CONFIGURATION



FLANGE OPTION DIMENSIONS							
OPTION	NOMINAL PIPE SIZE	FLANGE DIAMETER	BOLT CIRCLE DIAMETER	NO. OF BOLTS	DIAMETER OF BOLTS	BOLT HOLE	FLANGE
✓	1" ASME 150# (SHOWN)						DISCHARGE
	1.00	4.25	3.12	4	0.50	0.63	
✓	1.5" ASME 150# (SHOWN)						SUCTION
	1.50	5.00	3.88	4	0.50	0.63	
✓	1" ASME 300#						DISCHARGE
	1.00	4.88	3.50	4	0.63	0.75	
✓	1.5" ASME 300#						SUCTION
	1.50	6.12	4.50	4	0.75	0.88	
✓	25 mm DIN PN16						DISCHARGE
	25 mm	115 mm	85 mm	4	12 mm	14 mm	
✓	40 mm DIN PN16						SUCTION
	40 mm	150 mm	110 mm	4	16 mm	19 mm	


CERTIFIED FOR CONSTRUCTION

ONLY WHEN SIGNED

Signature _____
Date _____


Customer _____

Customer P.O. # _____

 PUMP WT.- 90 LBS

OPTION	AVAILABLE OPTIONS
✓	PUMP MATERIAL
	N6 DUCTILE IRON
	N6 DUCTILE IRON CASE / 91 SS IMPELLER
	91 STAINLESS STEEL
	20 HASTELLOY
	X4 CD4MCU SS
	OTHER:
	FLANGE FACE
	FLAT FACE
	RAISED FACE

DO NOT SCALE DRAWING UNLESS OTHERWISE SPECIFIED DIMENSIONS ARE IN INCHES TOLERANCES ARE:	
DECIMALS .XX ± -	
.XXX ± -	
ANGLES ± -	
SCALE -	SHEET 1 OF 1

		GRISWOLD PUMP COMPANY 22965 VAN BUREN STREET GRAND TERRACE, CA 92314-9687 PHONE: (909) 942-9222 / (925) 226-5255 WWW.GRISWOLDPUMP.COM	
TITLE 1.5 X 1 - 6 AA, ANSI PEO, SM PF			
DRAWN BY	R. Schwartz	DATE	1/17/17
CHECKED BY	R. Beach	DATE	1/26/17
APPROVED BY	B. Backman	DATE	1/26/17
ASSY. NO.		DRAWING NO.	LG0754
REV.			A