

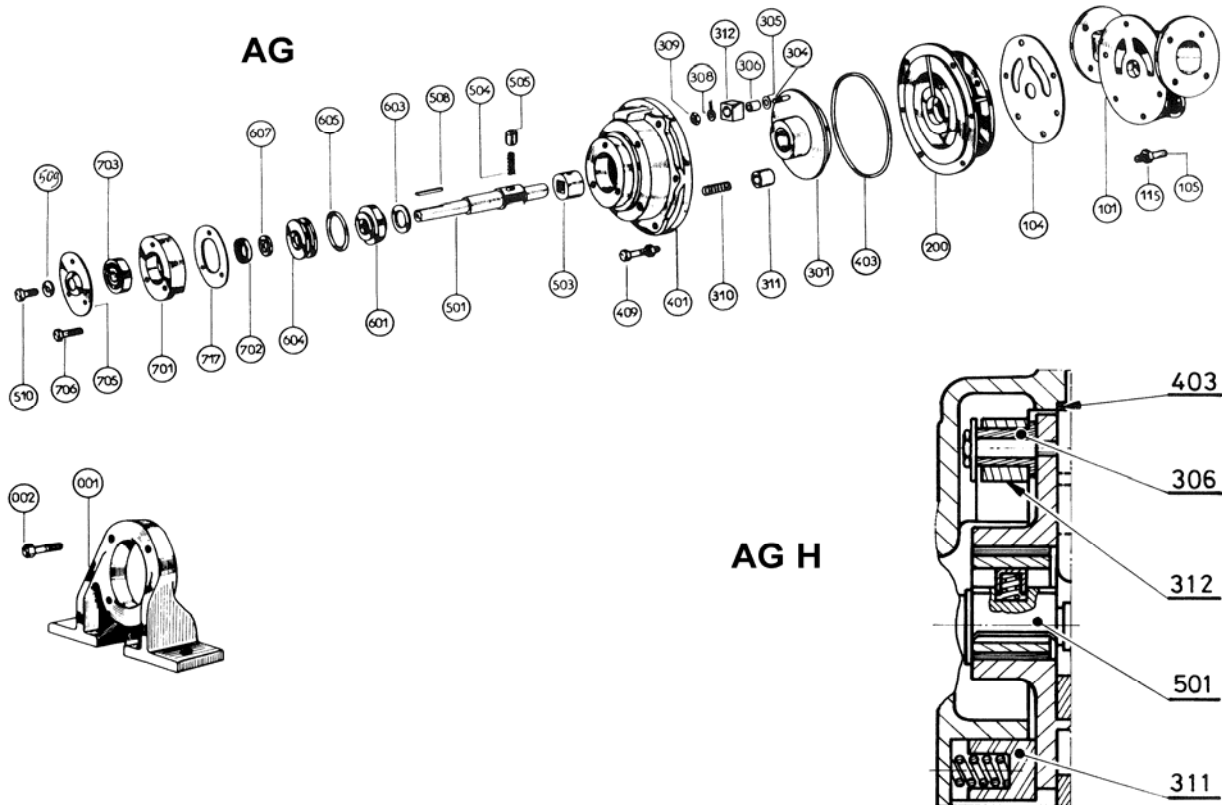
**BLACKMER**  
MODEL :

**PARTS LIST**  
**POMPES AG - AG H**

P.L. : 1005-B01

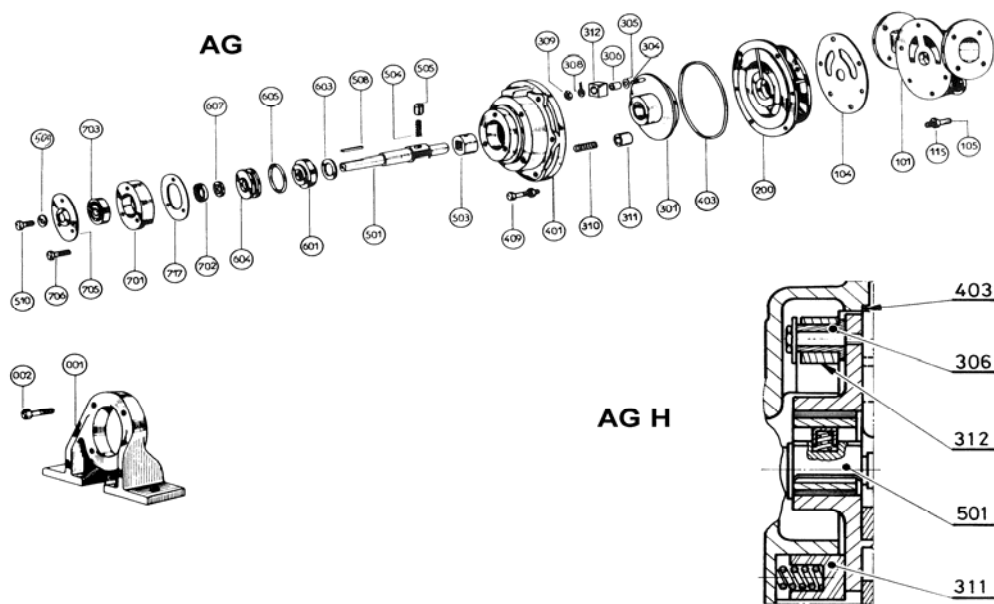
(Voir Instruction 1005-B00 for Installation, Operation and Maintenance)

Section	1005
Effective	October 2005
Replaces	July 2004

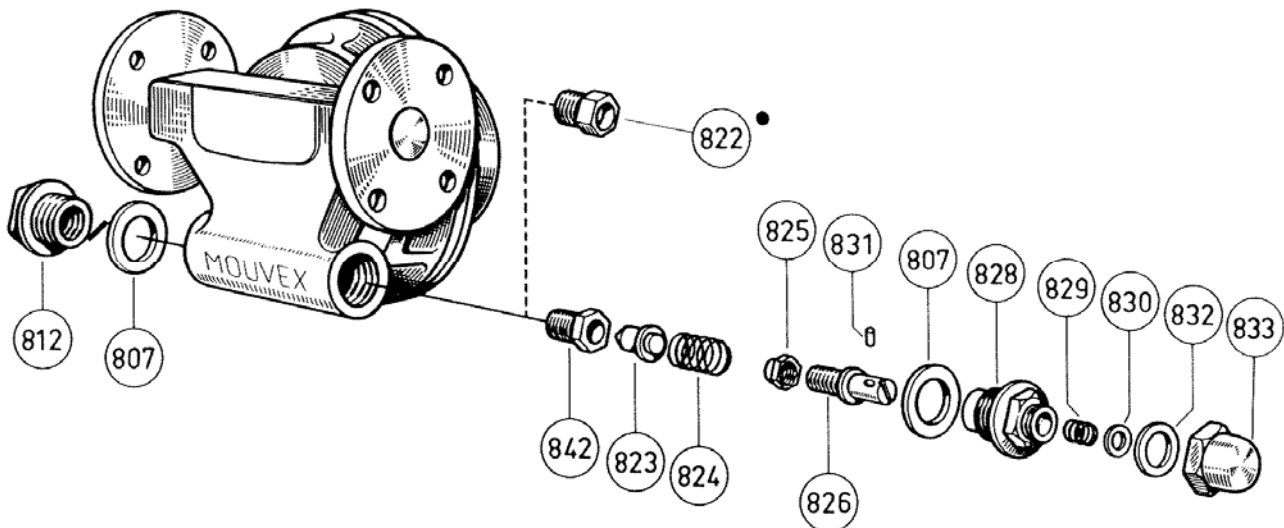


Reference			Description	Quantity		ARTICLE CODE		Wear parts
Ass.	Part	Available		Order	In Pump	AG	AG H	
98		◆	<b>Full set of screws</b>	1		301309.00		
	105		Stud		(5)			
	115		Nut		(5)			
	202		Stud		(1)			
	206		Nut		(1)			
	409		Screw		(6)			
	409a		Nut		(6)			
	706		Screw		(3)			
99		◆	<b>Full set of seals NITRILE</b>	1		301310.00		
99		◆	<b>Full set of seals FKM</b>	1			301311.00	
	104		Gasket		(1)			
	403		Seal		(1)			
100		◆	<b>Main body, complete</b>	1		301290.00		
	101		Main body		(1)			
	105		Stud		(5)			
	115		Nut		(5)			
200		◆	<b>Cylinder, complete</b>	1		301293.00		•
	201		Cylinder		(1)			
	203		Bulkhead		(1)			
	204		Bushing		(1)			
	202		Stud		(1)			
	206		Nut		(1)			

300		◆	<b>Complete piston</b>	1		303001.00	303002.00	•
	301		Piston		(1)			
	303	▲	Bushing	1		201306		
	398	◆	Slide block, complete	1		301294.00	301295.00	•
	304		Block pin		(1)			
	305		Spacer (only available in construction AG)		(1)			
	306		Bushing		(1)			
	308		Washer		(1)			
	309		Nut		(1)			
	312		Slide block		(1)			
400		◆	<b>Complete front cover</b>	1		301296.00		
400		◆	<b>Complete front cover</b>	1			301297.00	
	401		Front cover		(1)			
	399	◆	Set of guide block, complete	1		301298.00	301299.00	
	310		Spring		(3)			
	311		Piston rear - support		(3)			
403		◆	<b>Complete front cover seal NITRILE</b>	1		200825		
403		◆	<b>Complete front cover seal FKM</b>	1			200831	
500		◆	<b>Shaft complete</b>	1		301300.00		
500		◆	<b>Shaft complete</b>	1			301301.00	
	501		Shaft		(1)			
	503		Piston bearing		(1)			
	598	◆	Bearing spring complete	1		301302.00		
	504		Spring		(1)			
	505		Bushing		(1)			
	599	◆	set of key	1		301303.00		
	508		Key		(1)			
	509		Washer		(1)			
	510		Screw		(1)			



Reference			Description	Quantity		ARTICLE CODE		Wear parts
Ass.	Part	Available		Order	In Pump	AG	AG H	
600		◆	<b>Mechanical seal Monosir</b>	1		301304.00		•
	601		Bushing		(1)			
	603		Washer		(3)			
	604		Stationary seal face		(1)			
	605		Seal		(1)			
	607		Seal		(1)			
600		◆	<b>Mechanical seal Blocdir LR/VT</b>	1			301305.00	•
	610	◆	Stationary seal face Complete AG H	1			301306.00	
	604		Stationary seal face		(1)			
	605		Seal		(1)			
	627		Pin		(1)			
	697	◆	Rotating part Blocdir FKM	1			300375.00	
	612		Seal housing		(1)			
	613		Seal		(1)			
	614		Spring guide		(1)			
	615		Spring		(1)			
	616		Cage		(1)			
699		◆	<b>Full set of mounting screws NITRILE</b>	1		301312.00		
699		◆	<b>Full set of mounting screws FKM</b>	1			301313.00	
	605		Seal		(1)			
	607		Gasket		(1)			
	702		Gasket		(1)			
	717		Gasket		(1)			
700		◆	<b>Ball bearings</b>	1		301308.00		
	701		Bearing cage		(1)			
	702		Gasket		(1)			
	703	▲	Ball bearing	1		200546		
	705		Bearing cover		(1)			
	717		Gasket		(1)			



Reference			Description	Quantity		ARTICLE CODE		Wear parts
Ass.	Part	Available		Order	In Pump	AG	AG H	
840		◆	<b>Bypass complete</b>	1		<b>301314.00</b>		
	812	▲	Plug	1			204127	
	824	▲	Spring n°4	1			201123	
	833	▲	Cap	1			203391	
	897	◆	Adjusting Valve seat	1			301315.00	•
	823		Valve		(1)			
	842		Valve seat		(1)			
	898	◆	Set adjusting screw	1			301316.00	
	826		Screw		(1)			
	828		Nut		(1)			
	829		Spring		(1)			
	830		Washer		(1)			
	831		Pin		(1)			
	899	◆	Bypass gasket set	1			301317.00	
	807		Seal		(2)			
	832		Seal		(1)			

◆ Sets of parts or (▲) parts available to order

Keep this parts lists with Installation, Operation and Maintenance Instructions

To order the required spare parts, indicate the appropriate CUM numbers



ZI la Plaine des Isles - 2 Rue des Caillottes 89000 AUXERRE - FRANCE  
 Tél. : +33 3.86.49.86.40 or +33 3 86.49.87.09 - Fax : +33 3.86.49.87.17  
 E-Mail : [contact@blackmer-mouvex.com](mailto:contact@blackmer-mouvex.com) Internet : [www.blackmer.com](http://www.blackmer.com)